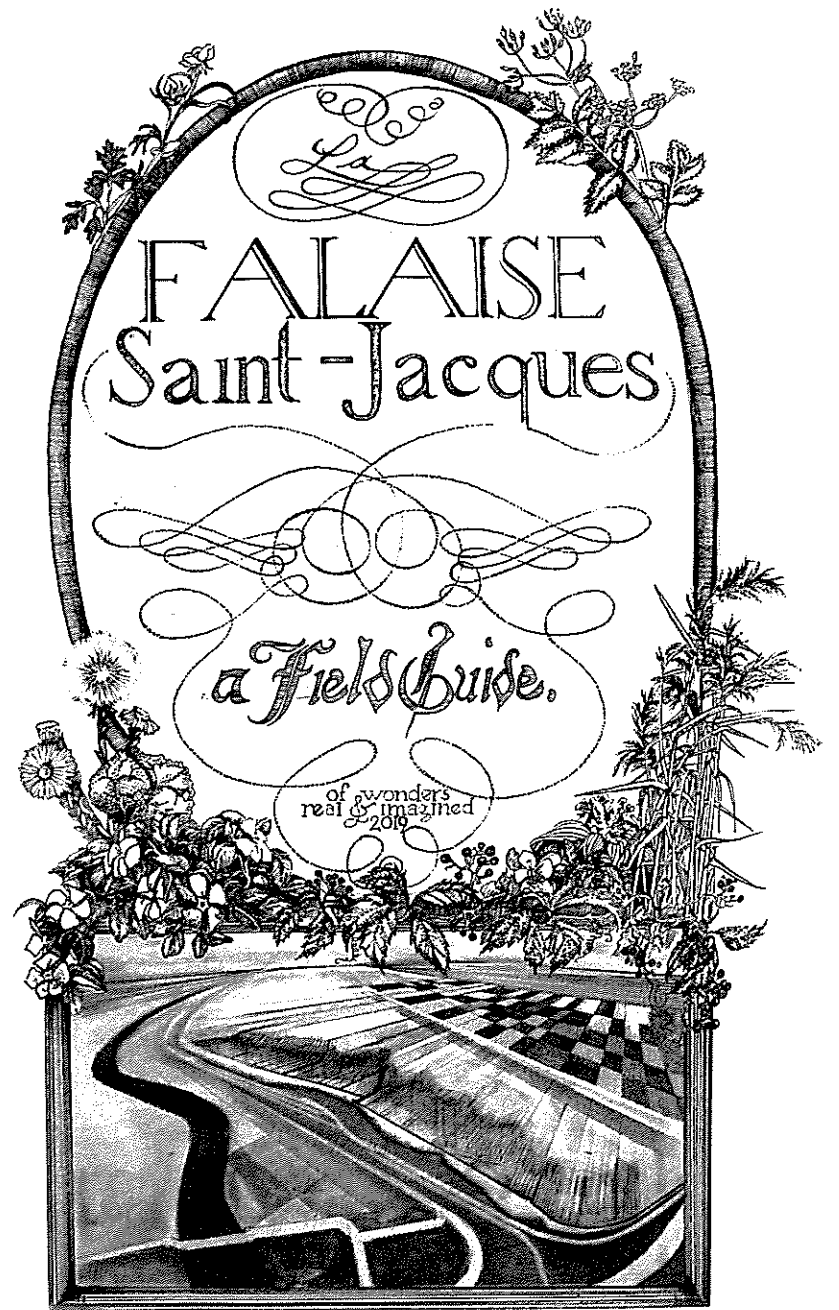


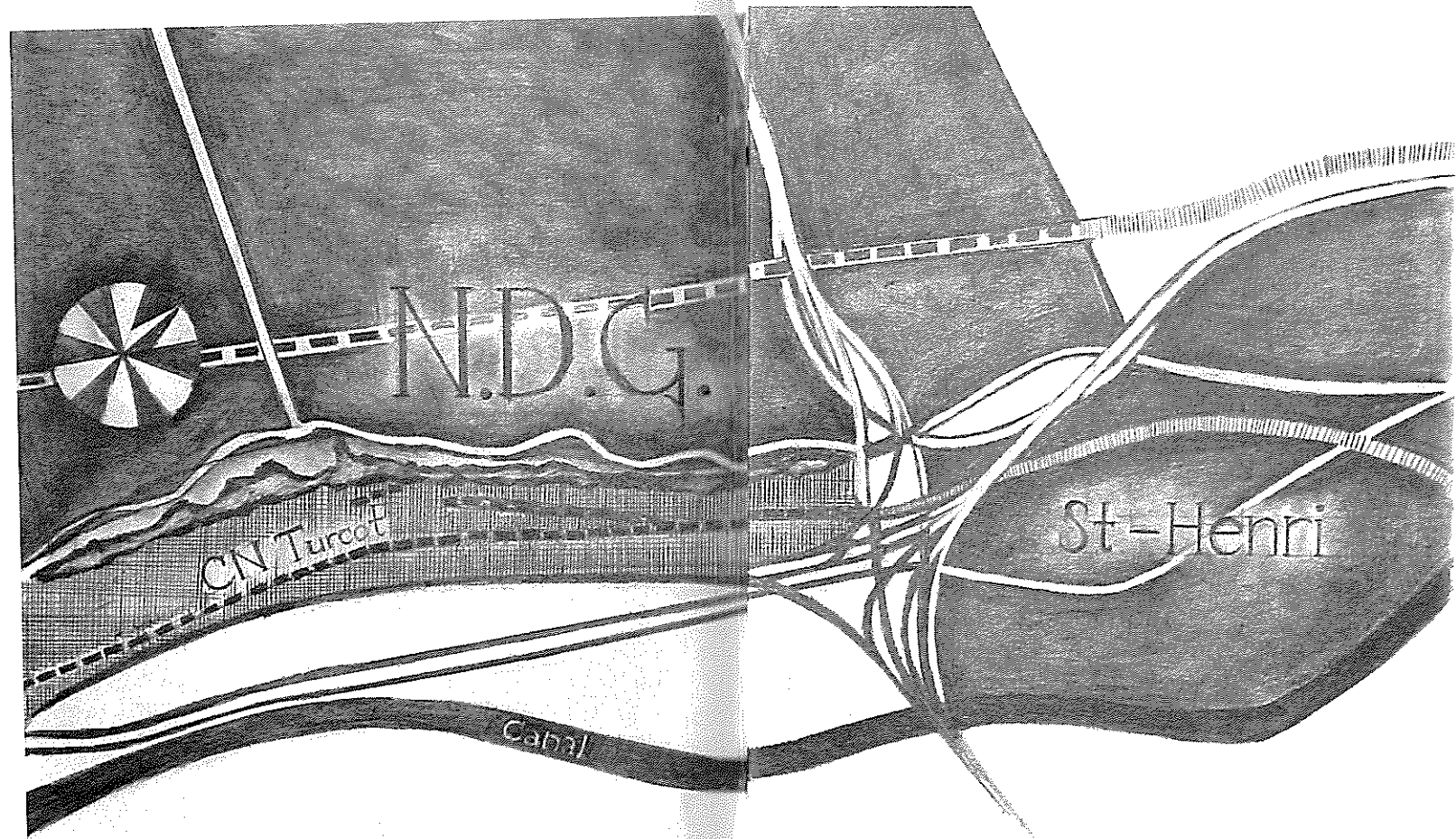
FAVISE
SAINT
JACQUES

45° 27' 42" N 73° 37' W



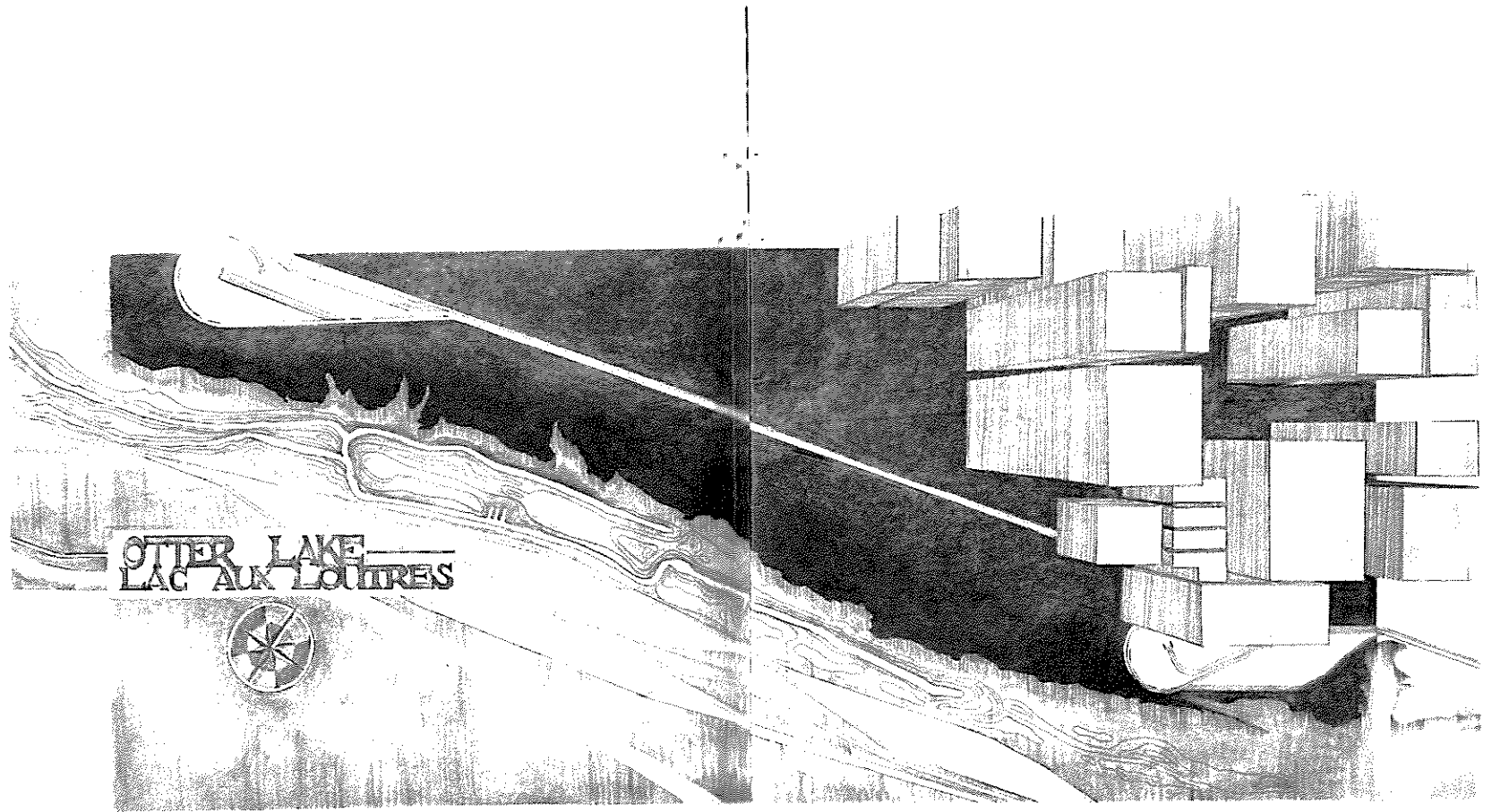
11 of 18 / 2019

Especially at night, especially in the summer when the windows are open, I can hear the freight trains .



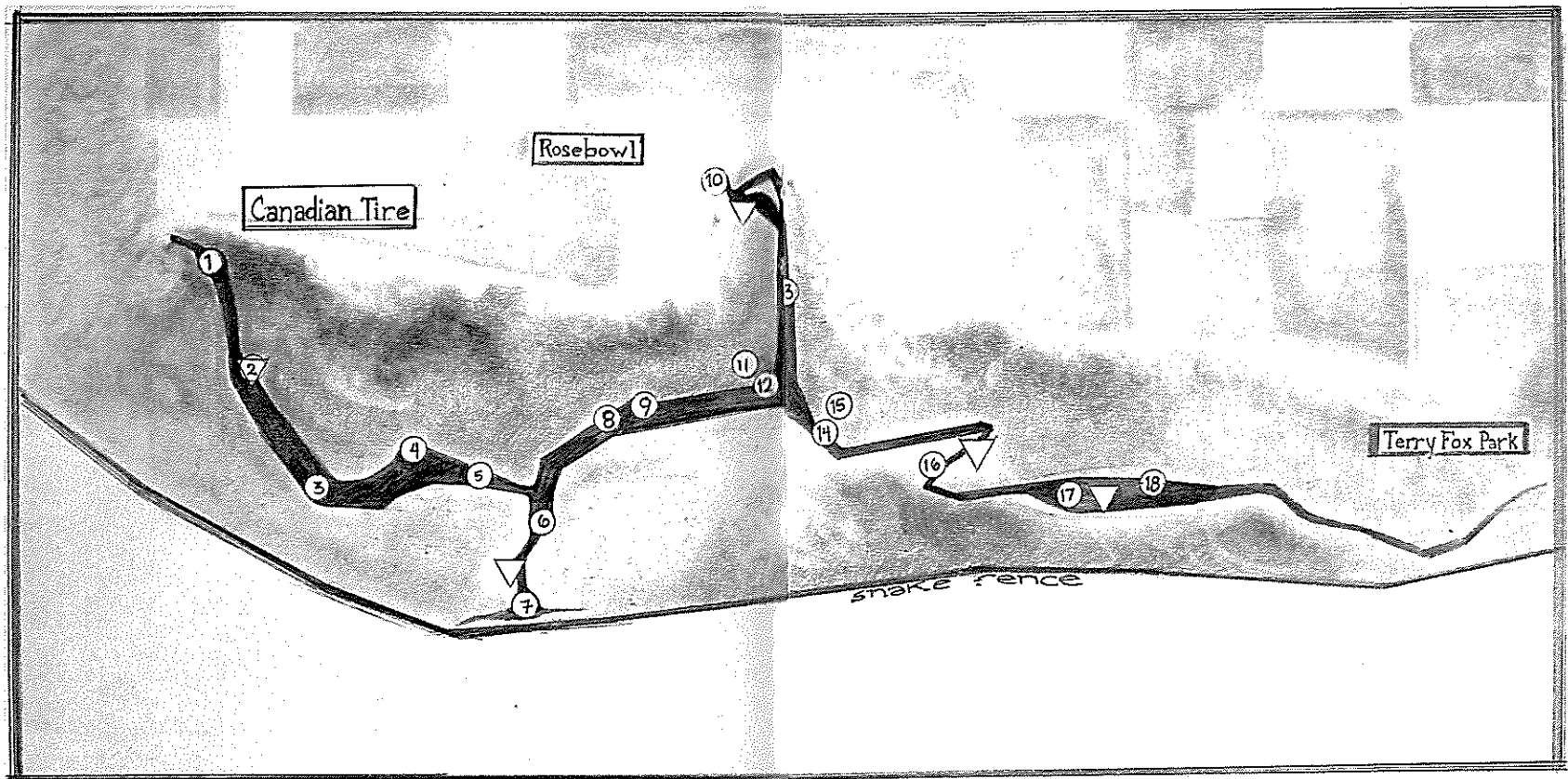
They pass cleanly through the knot on the way to Falaise .

I can't get through that knot .



The trains speed right over this place.
It was a lake once, then it was a river.

This was not very long ago.



▽ dangerous terrain

① you can see far

② steep, but possible

③ don't touch the asphalt shingles

④ a river of trash

⑤ the path vanishes

⑥ cut through the phragmite

⑦ cross over the fence to the train yard

⑧ end of the asphalt

⑨ look down for coltsfoot

⑩ entrance

⑪ fisher den

⑫ concrete like a sitting room

⑬ wild grapes

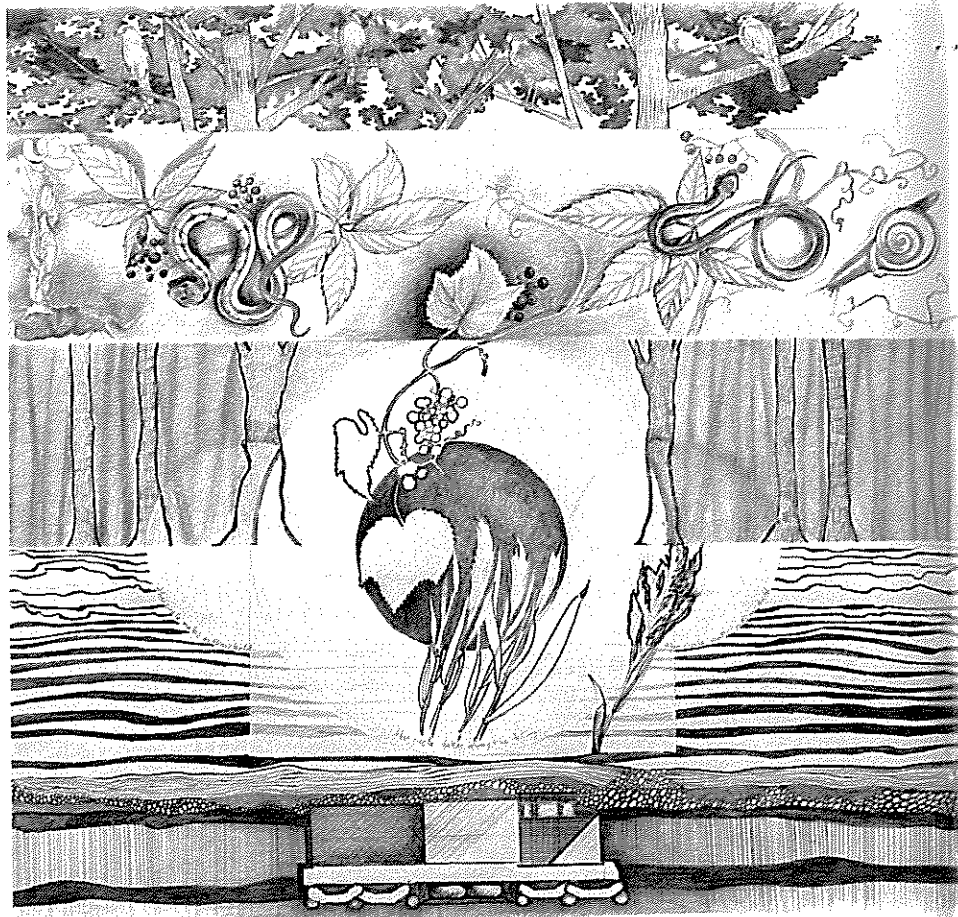
⑭ over the culvert

⑮ don't harm the bloodroot there

⑯ single file here

⑰ the path widens at a fallen tree

⑱ red chair



I tried to write it all down, but writing was wrong
because words have to go in order,
one after another .

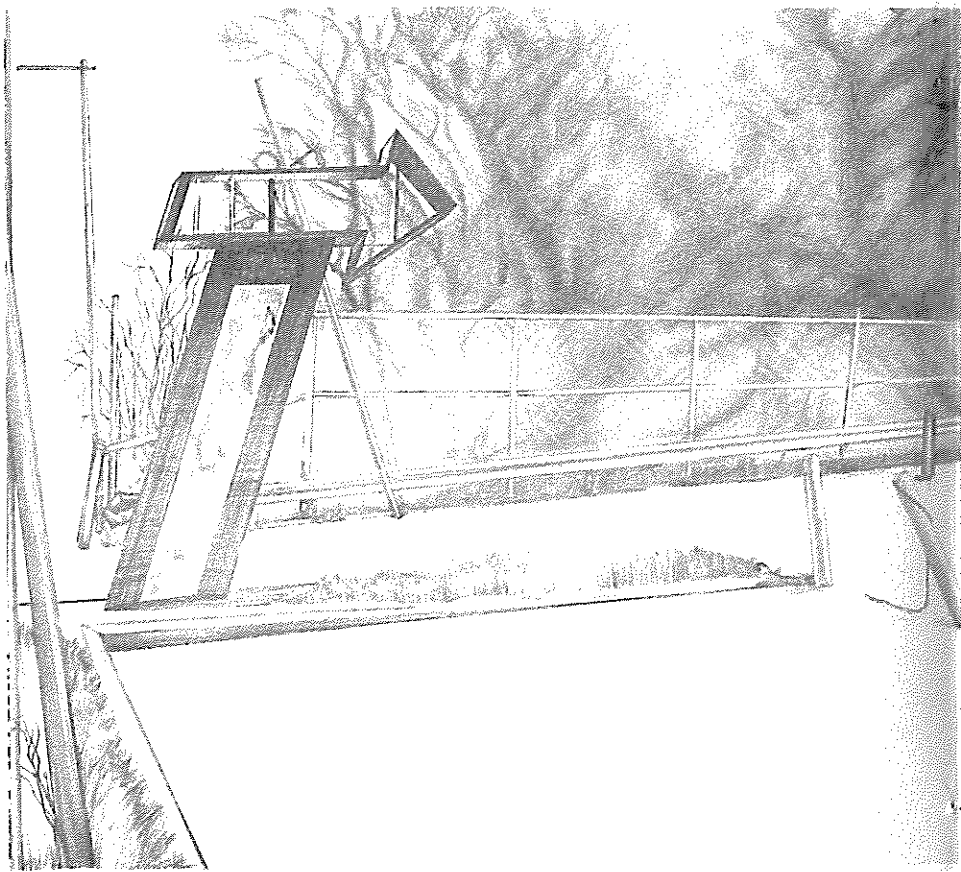
I felt this place was not in order, it is all at once .

Who else walked here ?

Paths signal care, resistance of the ruin .

Details, like sawed-off branches and trail markers,
show me how this place has friends .

traces of the past = traces of the future

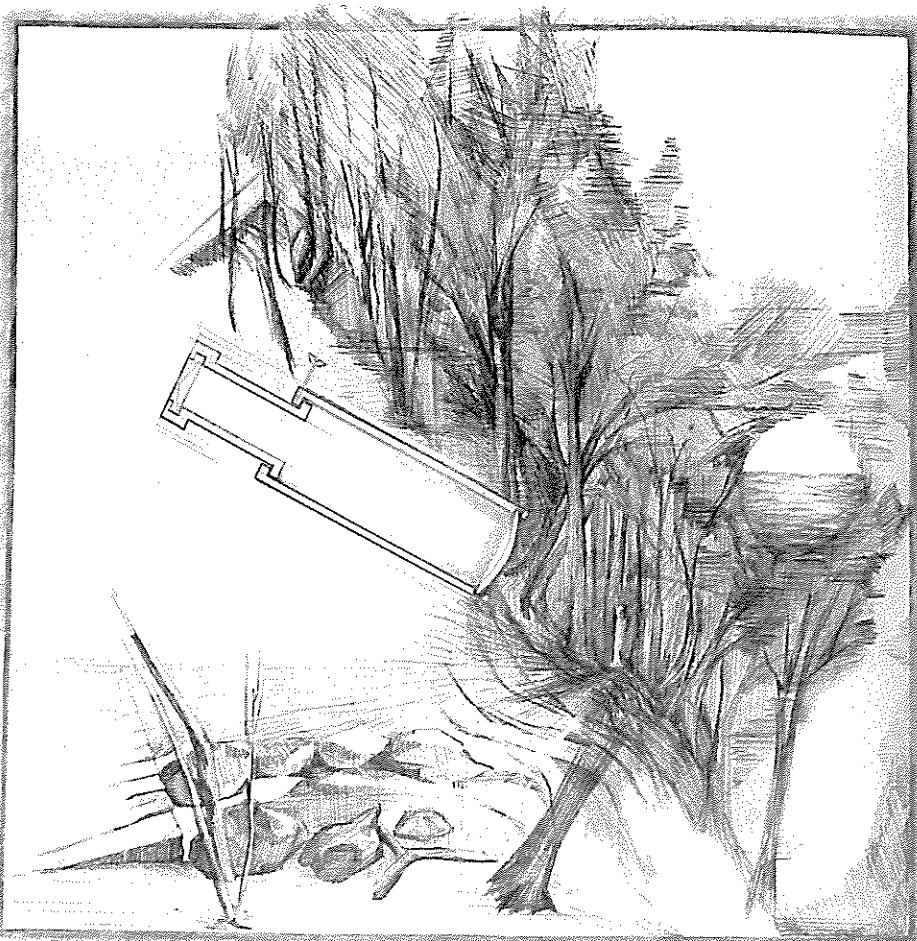




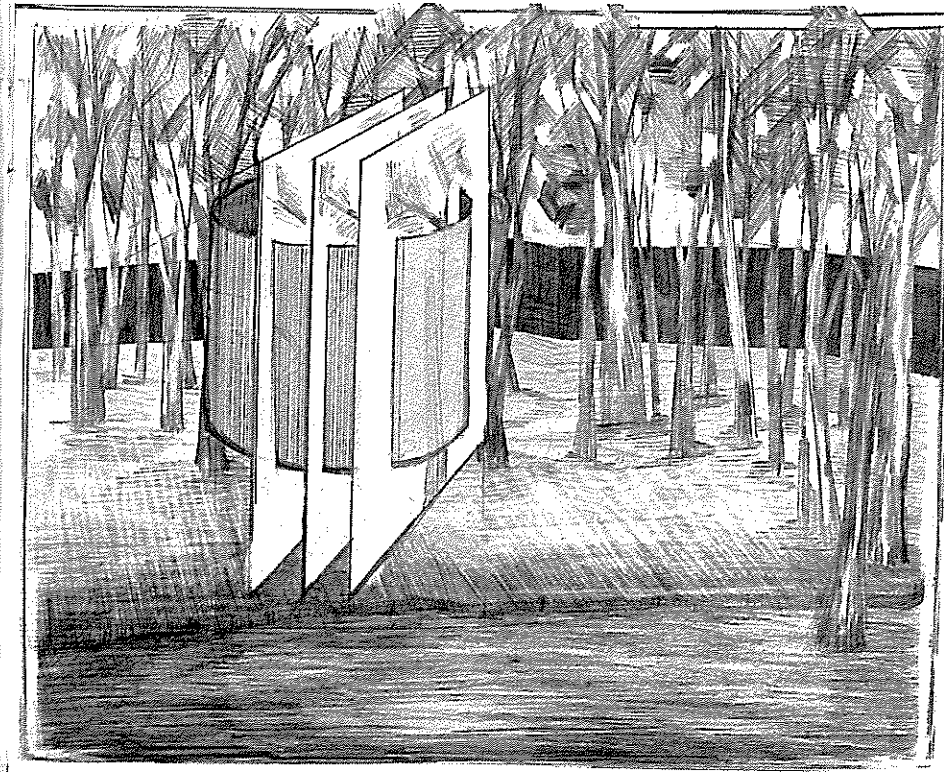
9



17

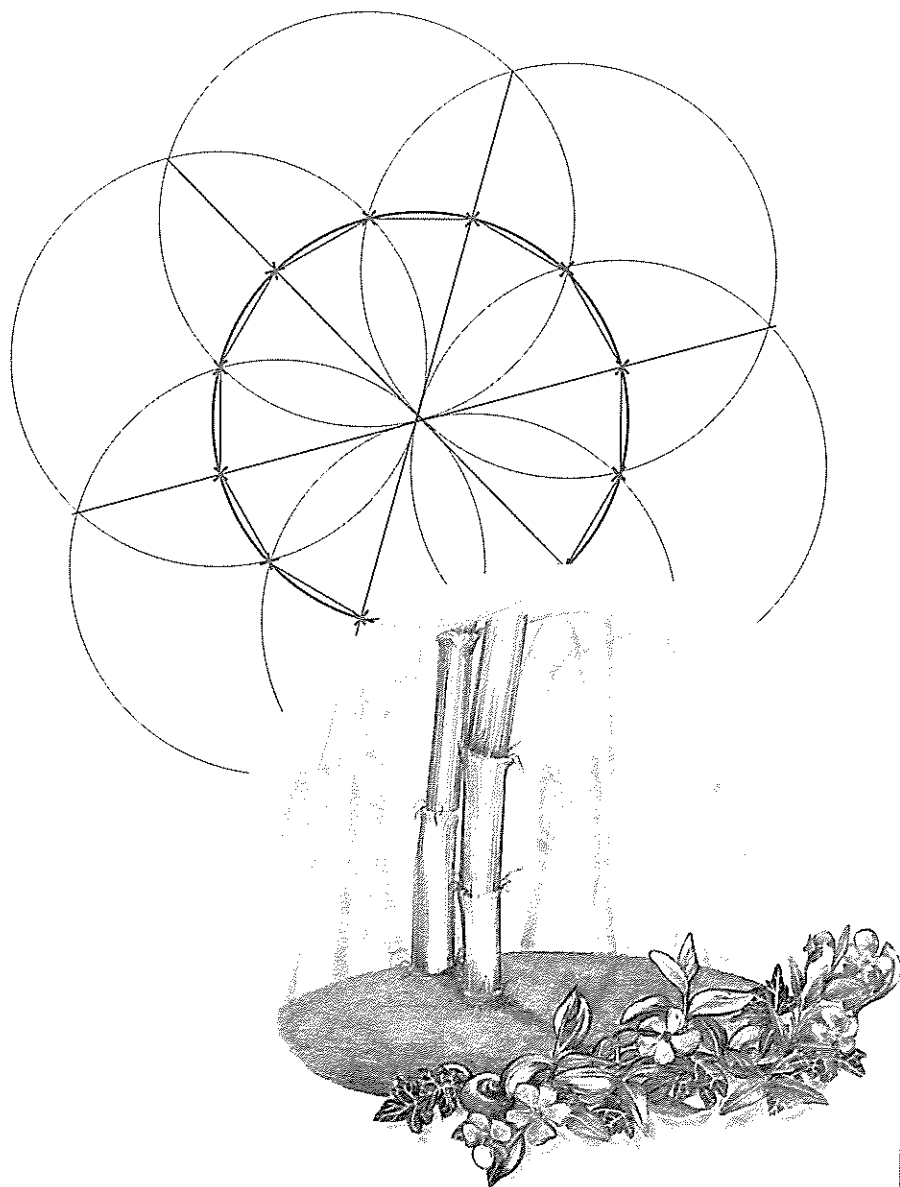


"If all life once *was* there,
that which remains
presents the means
to craft ... sensitive geographies."



The artwork is a biomachine -- it relays the
natural through the technological .
The body is a machine of circular
perception & so is the earth .

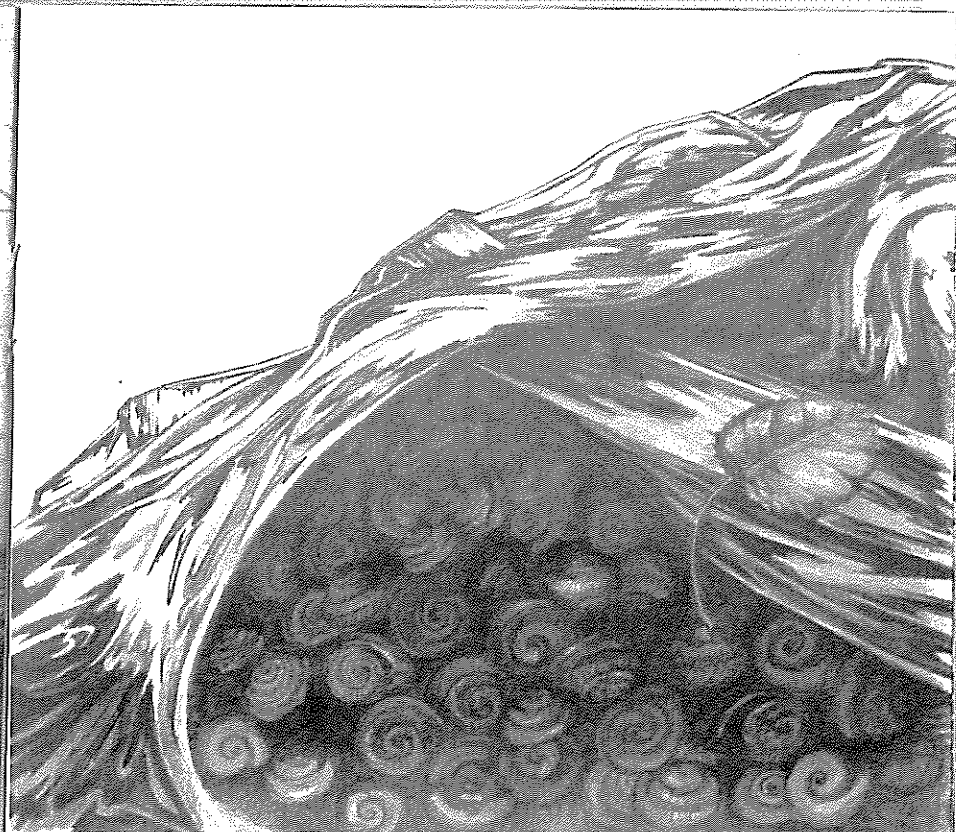
we see you ; we are seen



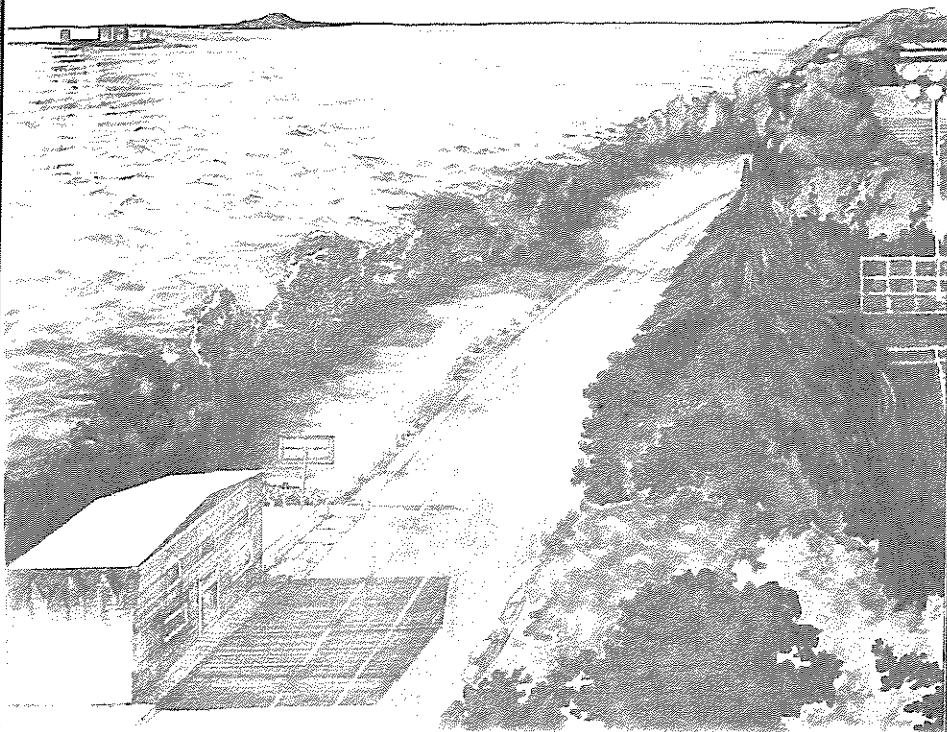
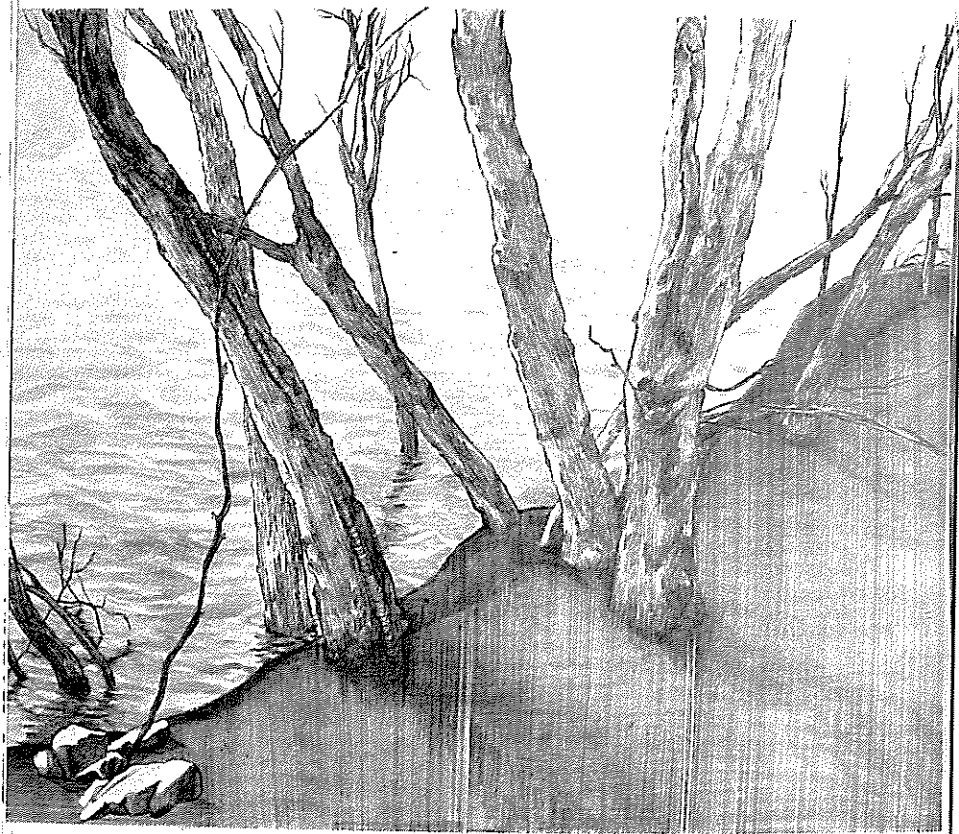




There are new protectors of this land .
There is an invitation to pause, and listen .

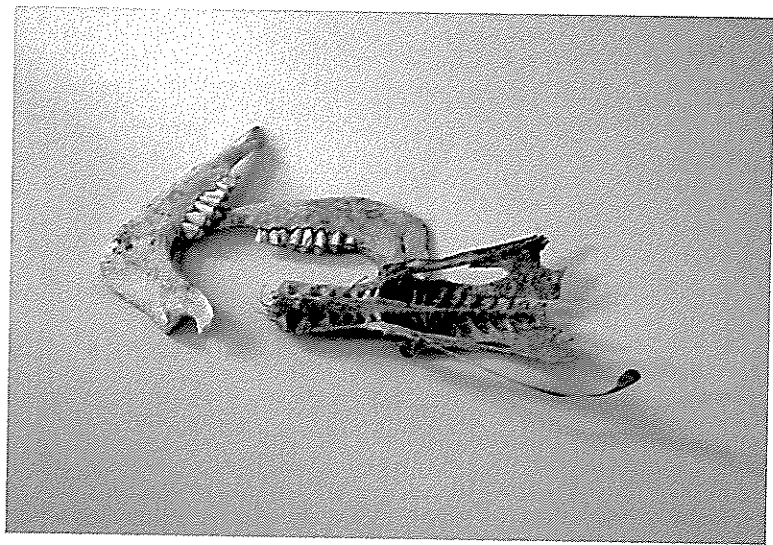


Listen: this used to be
the edge of the sea .

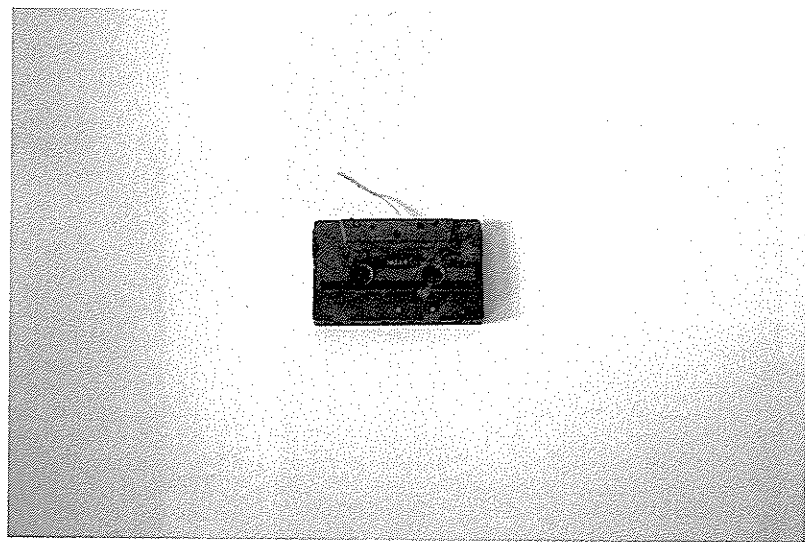


There's so much life here





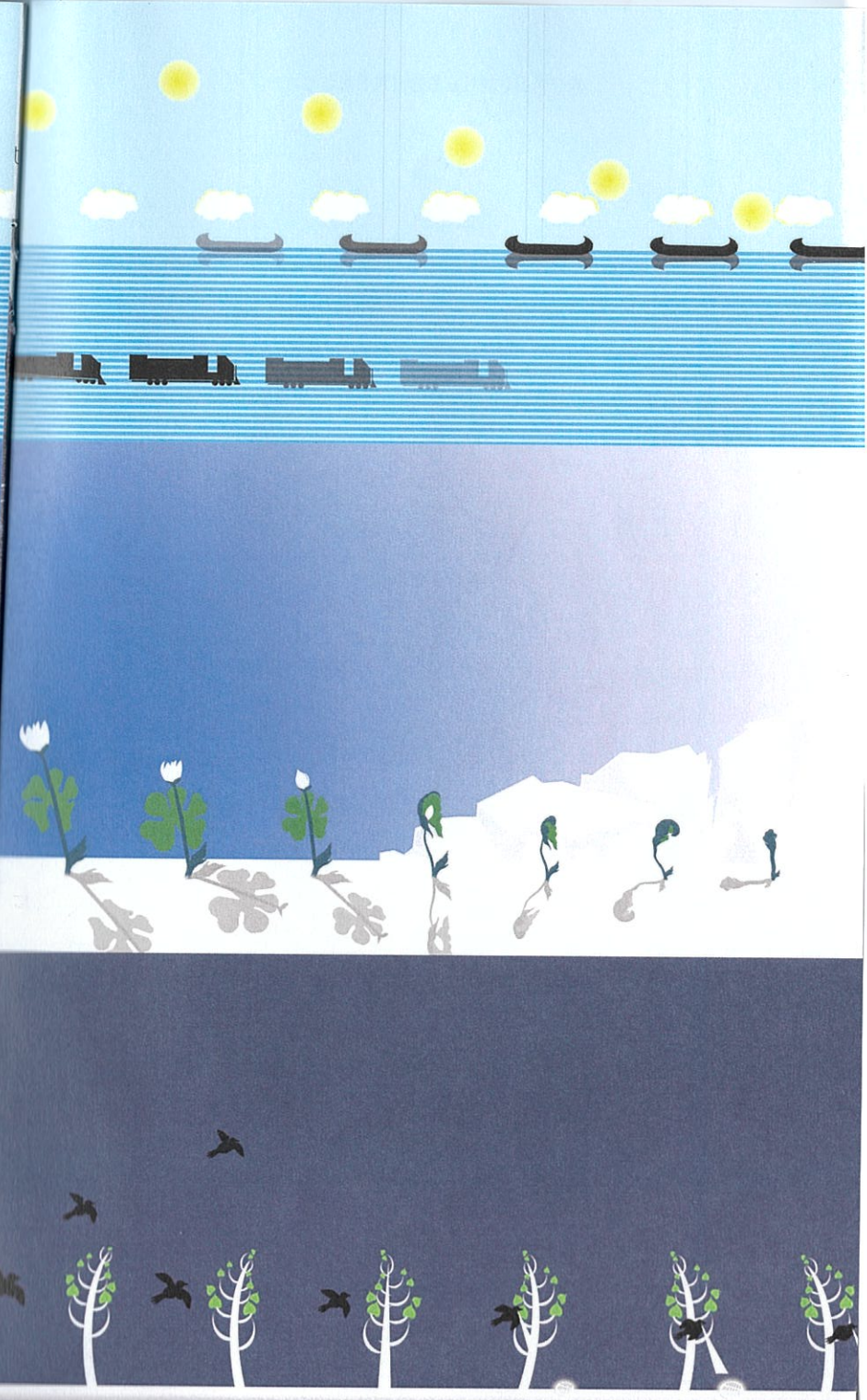
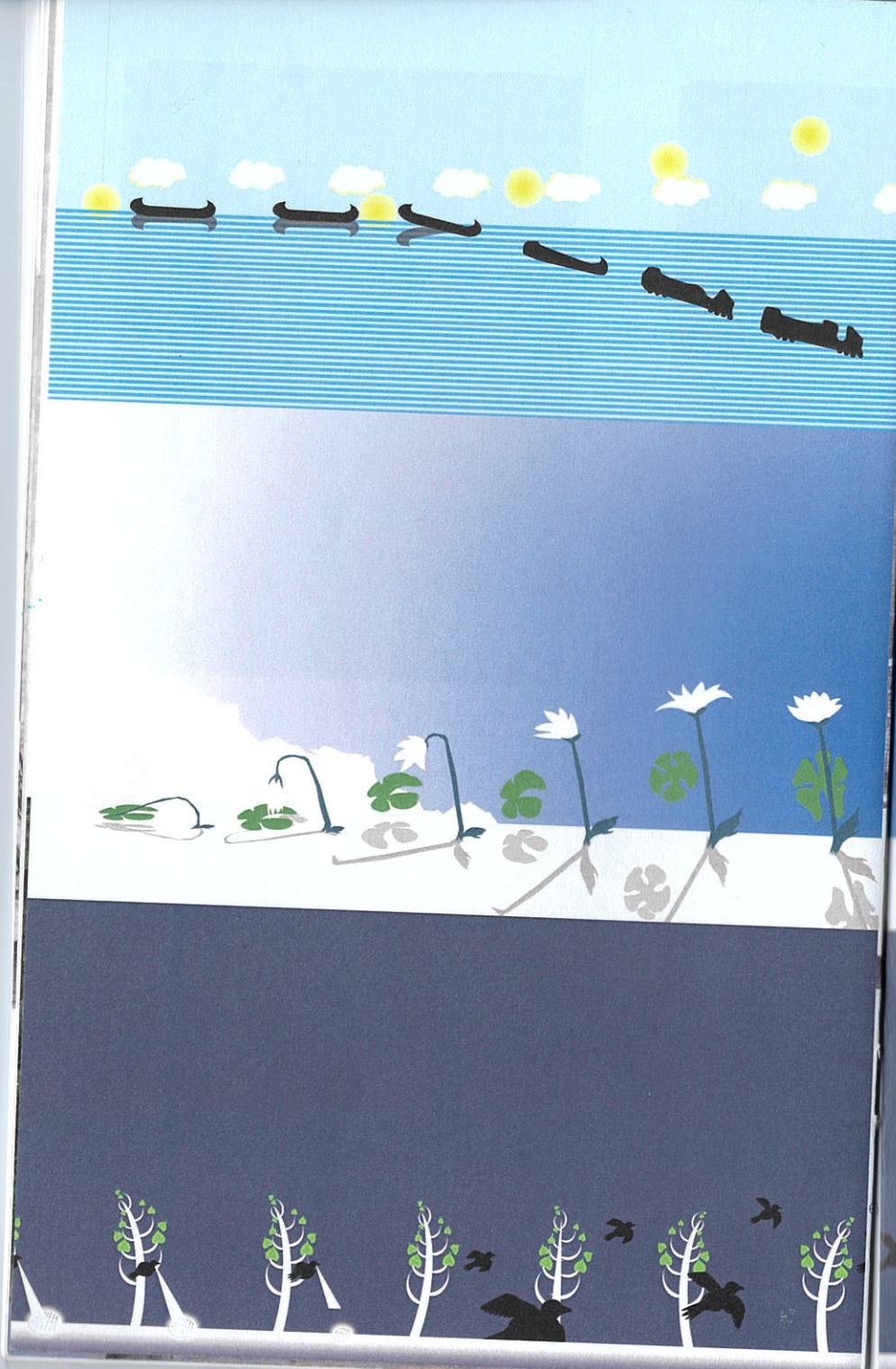
and life leaves things



behind .







ACKNOWLEDGEMENTS

AJ
Gage
Keith
Lazer
Lisa
MJ
thank you .

NOTES



Words and pictures by Lucie Lederhendler,
except page 13, from Hayden Lorimer *Caught in
the nick of time: Archives and fieldwork* The Sage
handbook of qualitative geography . Sage, 2010 .
& page 14, from Andrea Boetzkes, The Ethics of
earth art . University of Minnesota Press, 2010

More information about Sauvons la Falaise!
can be found at <http://sauvonslafalaise.ca>
or on their facebook page.

